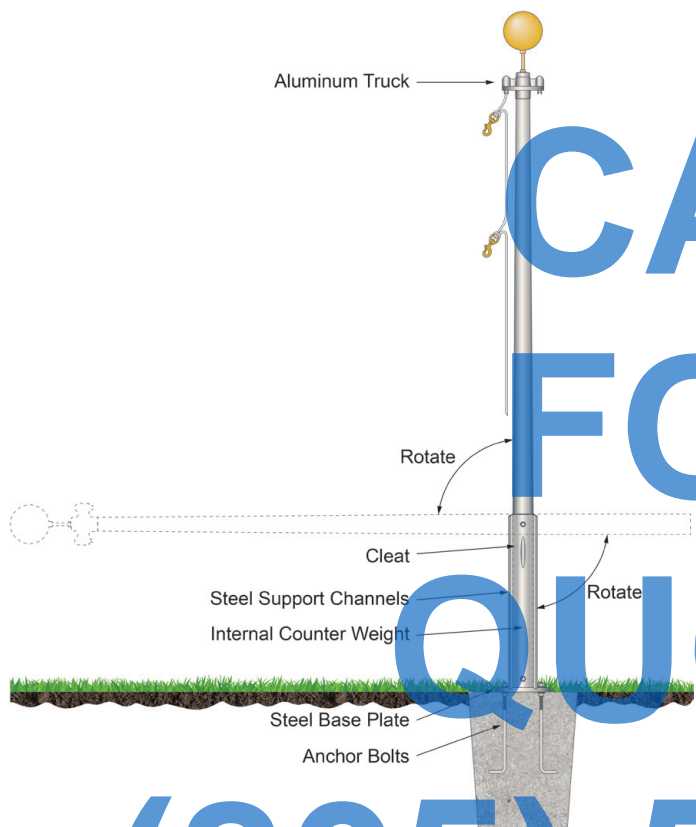


COUNTER-BALANCED TILTING FLAGPOLES

All of the 5" through 8" diameter cone tapered aluminum flagpoles up to 40' tall on pages 114 through 123 can be adapted with a counter-balanced tilt system. For ease of maintenance, the counter-balanced tilting flagpole has no equal. This unique design features a steel counter-weight inside the flagpole shaft to avoid disturbing the appearance of the tapered shaft. The base structure consists of two support channels welded to a base plate. The flagpole shaft is suspended by a pivot bolt and secured with a locking clip assembly. Anchor bolts are furnished for mounting to a concrete base. For 45' and taller poles, call for a custom quote. **Please allow 4 to 6 weeks after approval for shipping on satin poles.**

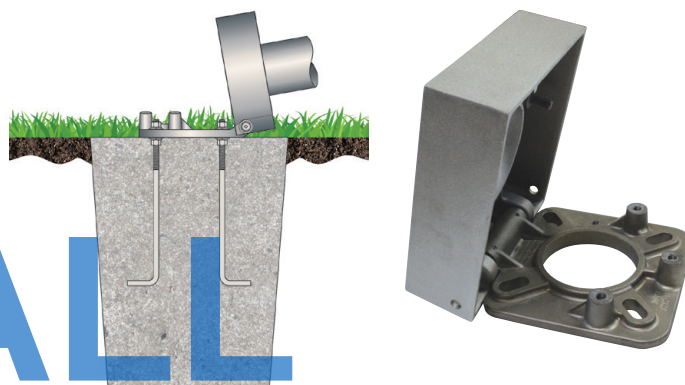


FOR COUNTER-BALANCED TILTING FLAGPOLES, ADD THE FOLLOWING PRICING TO ANY OF THE 5"-8" DIAMETER FLAGPOLES 40' AND UNDER ON PAGES 114-123.

BUTT DIAMETER	PRICE
5"	\$3,050
6"	3,930
7"	5,230
8"	7,130

TILTING SHOE BASE FLAGPOLES

All of the cone tapered aluminum flagpoles on pages 114 through 129 with a 3", 4", 5" or 6" butt diameter can be supplied with a tilting shoe base. The tilting base is circumferentially welded to the base eliminating the need for a flash collar. The hinged portion of the base is held in place by (3) stainless steel, Allen head bolts and pivots on a solid aluminum pivot rod. Anchor bolts are furnished for mounting to a concrete base. Not recommended for nautical poles.

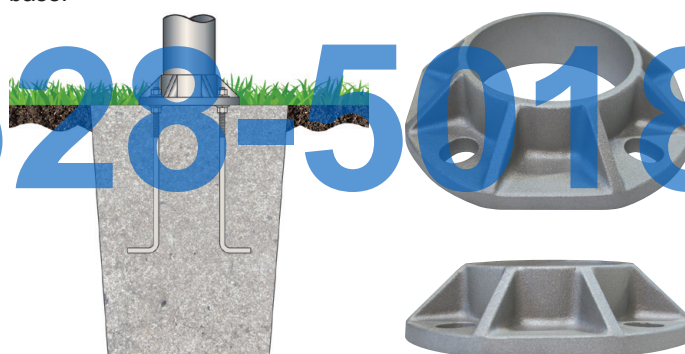


FOR TILTING SHOE BASE FLAGPOLES, ADD THE FOLLOWING PRICING TO ANY OF THE FLAGPOLES ON PAGES 114-129.

BUTT DIA.	1-2	3-6	7+
3"	\$580	\$560	\$510
4"	700	660	630
5"	720	690	640
6"	720	690	640

SHOE BASE FLAGPOLES

All of the cone tapered aluminum flagpoles on pages 114 through 129 can be supplied with a shoe base mounting. The aluminum base is circumferentially welded to the flagpole shaft. A spun aluminum flash collar is supplied as standard unless otherwise specified. Anchor bolts are furnished for mounting to a concrete base.



FOR SHOE BASE FLAGPOLES, ADD THE FOLLOWING PRICING TO ANY OF THE FLAGPOLES ON PAGES 114-129.

BUTT DIA.	1-2	3-6	7+
3"	\$360	\$350	\$330
4"	380	370	360
5"	430	400	390
6"	450	430	400
7"	460	450	430
8"	490	480	460
10**	Call for pricing.		
12**	Call for pricing.		

*In addition to a shoe base, a mandrel is inserted into pole for added structural support.